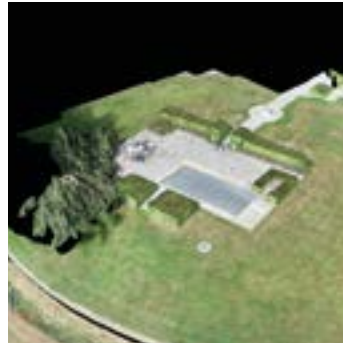


Aerial Geo Drone

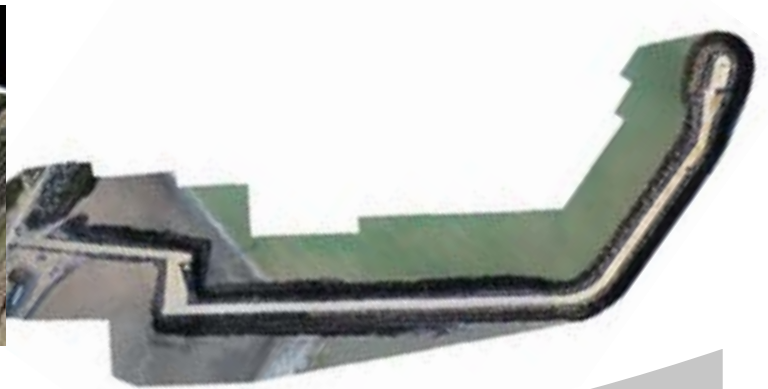
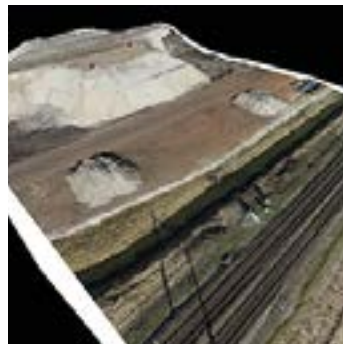
Phantom 4 Pro V2.0 Aerial Survey Drone



AERIAL SURVEY DRONE

GEOxyz offers you a fast, accurate solution to map areas and objects. The Drone Services division focuses on the acquisition and processing of aerial images to produce the following products:

- Orthophoto mosaic
- Altitude model (DSM / DTM)
- 3D point cloud
- Maps



TECHNICAL SPECIFICATION**Aircraft**

Weight (Battery & Propellers Included)	1375 g
Diagonal Size (Propellers Excluded)	350 mm
Max Ascent Speed	S-mode: 6 m/s P-mode: 5 m/s
Max Descent Speed	S-mode: 4 m/s P-mode: 3 m/s
Max Speed	S-mode: 45 mph (72 kph) A-mode: 36 mph (58 kph) P-mode: 31 mph (50 kph)
Max Tilt Angle	S-mode: 42° A-mode: 35° P-mode: 25°
Max Angular Speed	S-mode: 250°/s A-mode: 150°/s
Max Service Ceiling Above Sea Level	6000 m
Max Wind Speed Resistance	10 m/s
Max Flight Time	Approx. 30 minutes
Satellite Positioning Systems	GPS/GLONASS

Vision System

Vision System	Forward Vision System Backward Vision System Downward Vision System
Velocity Range	≤50 kph at 2 m above ground
Altitude Range	0 - 10 m
Operating Range	0 - 10 m
Obstacle Sensory Range	0.7 - 30 m
FOV	Forward: 60°(Horizontal), ±27°(Vertical) Backward: 60°(Horizontal), ±27°(Vertical) Downward: 70°(Front and Rear), 50°(Left and Right)
Measuring Frequency	Forward: 10 Hz Backward: 10 Hz Downward: 20 Hz
Operating Environment	Surface with clear pattern and adequate lighting (lux>15)

Camera

Sensor	1" CMOS Effective pixels: 20M
Lens	FOV 84° 8.8 mm/24 mm (35 mm format equivalent) f/2.8 - f/11 auto focus at 1 m - ∞
Mechanical Shutter Speed	8 - 1/2000 s
Electronic Shutter Speed	8 - 1/8000 s
Image Size	3:2 Aspect Ratio: 5472 × 3648 4:3 Aspect Ratio: 4864 × 3648 16:9 Aspect Ratio: 5472 × 3078
Supported File Systems	FAT32 (≤32 GB); exFAT (>32 GB)
Photo	JPEG, DNG (RAW), JPEG + DNG
Video	MP4/MOV (AVC/H.264; HEVC/H.265)

Supported SD Cards	Micro SD Max Capacity: 128GB
Write speed	≥15MB/s, Class 10 or UHS-1 rating required
Operating Temperature Range	32° to 104°F (0° to 40°C)

Charger

Voltage	17.4 V
Rated Power	100 W

Gimbal

Stabilization	3-axis (pitch, roll, yaw)
Controllable Range	Pitch: -90° to +30°
Max Controllable Angular Speed	Pitch: 90°/s
Angular Vibration Range	±0.02°

Infrared Sensing System

Obstacle Sensory Range	0.6 - 23 feet (0.2 - 7 m)
FOV	70° (Horizontal), ±10° (Vertical)
Measuring Frequency	10 Hz
Operating Environment	Surface with diffuse reflection material, and reflectivity > 8% (such as wall, trees, humans, etc.)

Remote Controller

Operating Frequency	2.400 - 2.483 GHz and 5.725 - 5.850 GHz
Battery	6000 mAh LiPo 2S
Operating Current/Voltage	1.2 A@7.4 V
Video Output Port	GL300K: HDMI GL300L: USB

Intelligent Flight Battery

Capacity	5870 mAh
Voltage	15.2 V
Battery Type	LiPo 4S
Energy	89.2 Wh
Net Weight	468 g
Charging Temperature Range	41° to 104°F (5° to 40°C)
Max Charging Power	160 W

App / Live View

Mobile App	DJI GO 4
Live View Working Frequency	2.4 GHz ISM, 5.8 GHz ISM
Live View Quality	720P @ 30fps, 1080P @ 30fps